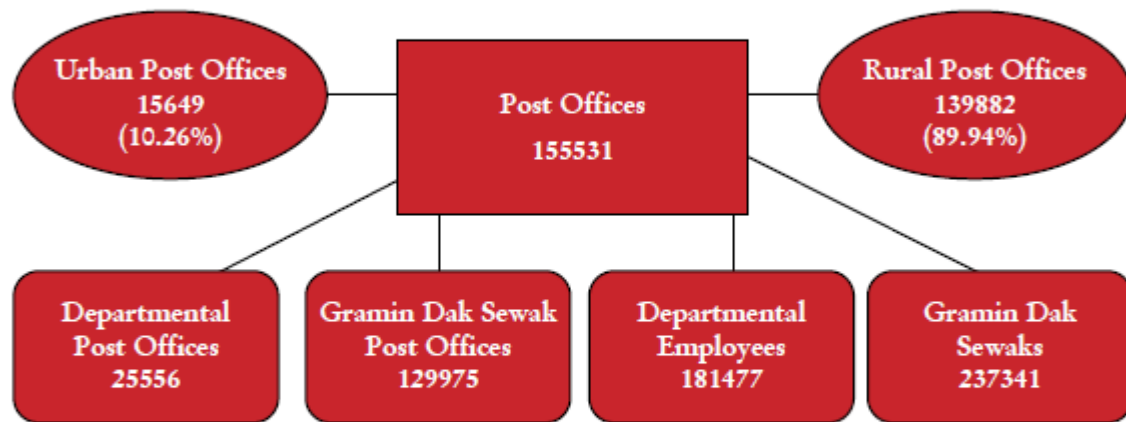

“Know Each Others Service”

— Indian Postal Service —

Aarti Verma IPoS (2016)

Department of Posts – The Last mile Reach
As on 31.03.2018



On an average, 8770 people are served by a Post Office in the country; in rural areas, a Post Office serves 6455 people, and in urban areas, a Post Office serves 29458 people.

Average area served by a Post Office is 21.14 sq.km.

DEPARTMENT OF POSTS – FUNCTIONAL

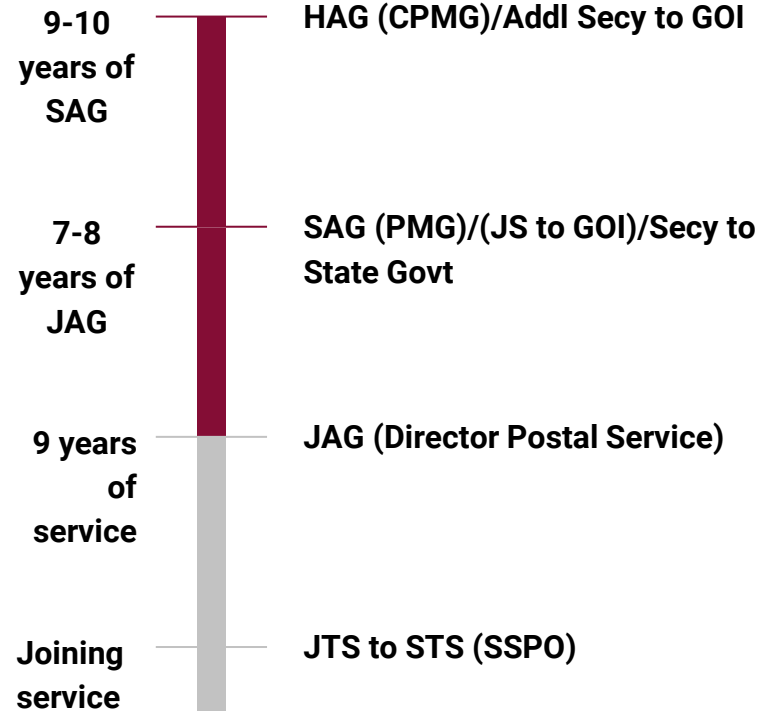
Secretary (Posts) / Chairperson, Postal Services Board / Director General,
 Department of Posts

Members, Postal Services Board



ACRONYMS
 CEPT – Center for Excellence in Postal Technology
 RAKNPA - Rafi Ahmed Kidwai National Postal Academy
 ASP – Assistant Superintendent, Posts
 IP – Inspector, Posts
 ASRM – Assistant Superintendent of Railways Mail Service
 IRM – Inspector of Railway Mail Service
 RMS – Railway Mail Service

Hierarchy Explained



Work as Divisional Head

- Administration/ HR
- Visits & Inspections
- Finance
- Infrastructure Development
- Business Development & Marketing
- Public Grievance
- Disciplinary action

Interaction

- **Synthesising Service**
- **IAS - DBT, Govt schemes**
- **IPS - Loss and Fraud cases**
- **IFS - PSK**
- **IRS - BNPL customers, Foreign post**
- **IFoS - Land & Tribal related matters**
- **Railways - RMS**
- **ITS - E commerce**

What's NEW with Postal Service

- Parcel Directorate
- Aadhar Enrolment & Updation
- IPPB (India Post Payments Bank)

Vision for resurgent India Post- APJ Abdul Kalam



“ Post Office is the only institution in the country, which touches every person’s life. This is demonstrated by the fact that whenever government or non-government agencies attempt to reach the largest number of people they think of the Post Office. ”



Thanks

aarti.verma2007@gmail.com

9214599729



